



MAX SECURE

# Spyware Detector

## Enterprise Edition

### Installation Guide

Spyware Detector Enterprise Edition provides powerful centralized spyware scan management solution across networks.

#### **Key Features:**

- Comprehensive scanning and eradication
- Centralized management
- Automatic spyware definition updates and free upgrades
- Comprehensive database to detect and eradicate more than 2,57,000 spyware traces
- This version can scan all machines in your network, which are connected using NetBIOS
- IP scanning is also provided.

#### **A) System Requirements:**

**Supported Platforms:** Windows XP Professional, XP Home, 2000 Professional, 2000 Server and 2003 Server

##### **Server:**

Recommended Hardware configuration:

Pentium III Processor or above

128 MB RAM or above

##### **Client:**

Recommended Hardware configuration

Pentium I Processor or above

64 MB RAM or above

#### **B) Pre-requisites / Pre-installation operations**

1. **Case A:** Domain based network (where file sharing service is installed on the clients machine)
  - Admin can remotely install the client from the server
  - For remote connection:
    - The login name used on the server should have admin rights of the client's machine.
    - Windows default share i.e. \\MachineName\Admin\$ should be accessible from the server.

**Case B:** IP based network (where file sharing service is not installed on the client's machine)

- The client setup should be installed on each client manually.



MAX SECURE

# Spyware Detector

## Enterprise Edition

2. Network setup at Client node (for **workgroup** only, in domain based network setup is not required)
  - a. Right click on 'My Network Places' to select 'Properties'.
  - b. Click on "Set up a home or small office network."
  - c. As "Welcome to the Network Setup Wizard" opens, click on Next.
  - d. Click on Next.
  - e. Select "No, let me choose another way to connect to the internet."
  - f. In next wizard select second option - "This computer connects to the Internet through a residential gateway or through another computer on my network" and click on Next.
  - g. Type computer description and name; click on Next.
  - h. In next wizard should display workgroup Name (it should be common name for all PCs) and click on Next.
  - i. Please wait for some time while configuring the workgroup to network.
  - j. Select **"Turn on file and printer sharing"**; click Next
  - k. Click on Next.
  - l. Select 4<sup>th</sup> option "Just finish the wizard; I don't need to run the wizard on other computers"; click on Next
  - m. Click on Finish.
3. For "Win XP Pro" node set up, follow steps given below.
  - a. Click "Control panel" from Start menu
  - b. Double click "Administrative tool"
  - c. Double click "Local Security Policy"
  - d. Click on "+" sign against "Local Policies"
  - e. Select "security options"
  - f. Double click on "Network Access: Shares that can be accessed anonymously" and check whether "admin\$" is typed or not. If not then type "admin\$".
  - g. Double click on "Network Access: Sharing and Security model for local accounts" and change it to **"Classic: Local users should authenticate as themselves"**
4. Please note that for **Win XP Service pack 2** nodes, blank password is not allowed (ensure that each Win XP Service pack 2 node has set the password).
5. If the user has installed some firewall then firewall should allow SDEEService.exe for listening on ports (6000 – 6010).

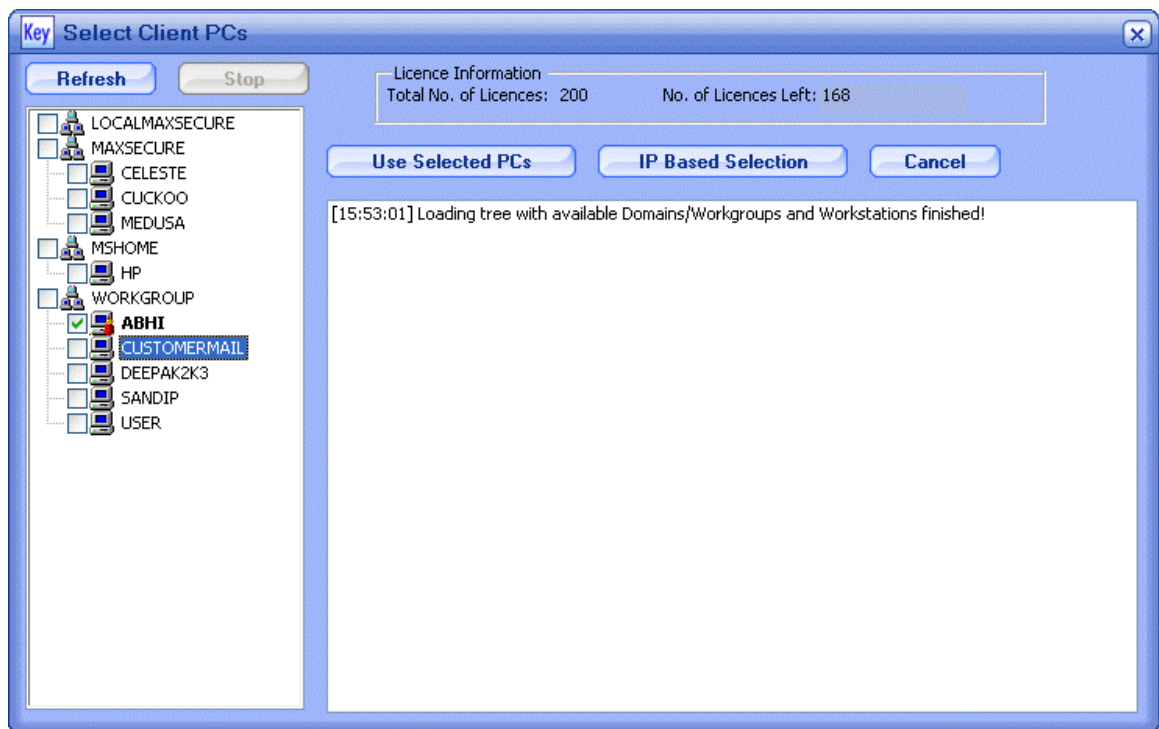
### C) Installation of Server

1. Click on "SDServerEnterprise.exe"
2. Click on Next
3. Accept the agreement
4. click Next



## D) Post Installation

1. To scan the entire network, you will have to login as an administrator for that domain to be scanned, or as administrator on the computer provided all the machines have a administrator users configured with admin rights assigned.
2. A panel will open which will ask for client selection. In an automated process this interface will populate all the machines in your network.



3. Click on the workgroup to select the all nodes within workgroup.
  - a. To select individual node, click on the respective node under workgroup tree.
4. During the client connection, if the client asks for user id then type "Administrator" and click "OK"
5. Click on "Use Selected PCs" (selected nodes for scanning)
  - a. This configuration can be changed later by clicking on "option" tab (refer help section for more detailed information)
6. Click on "IP Based Selection" (For IP based client)
  - a. Give the range of your IP addresses in your network (e.g. 193.168.0.1 – 193.168.0.254)
  - b. This will scan IP based network for available IPs in the network and show it under "IP based machines". To select individual node, click on the respective node under IP based machines tree.

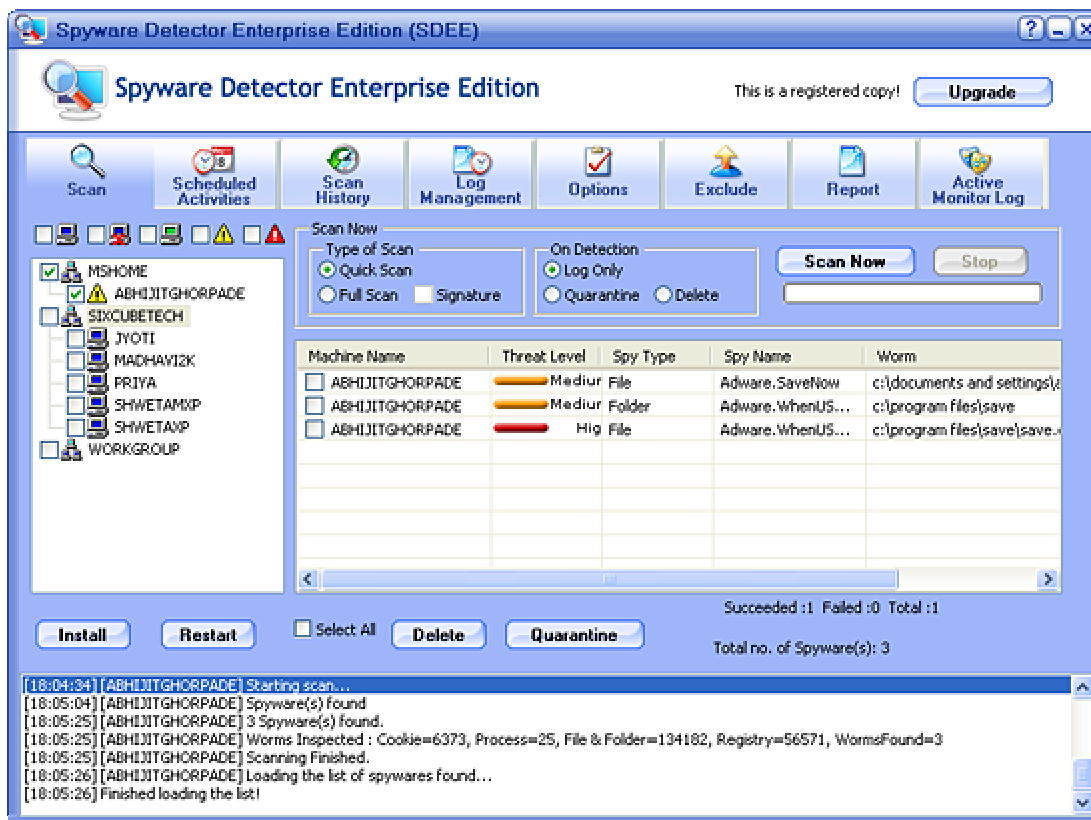


MAX SECURE

# Spyware Detector Enterprise Edition

## E) Installation of client service on selected nodes:

1. To scan selected nodes, client service should be installed on all nodes.
2. To install client service select all the nodes.
3. Click on the "Install" button of the scan tab page.



## F) Product Registration:

1. The product ships with 5 days trial period.
2. Place an order to get Registration Key.
3. Enter the Registration Details.
4. Click on "Register"